

JAYMINTON METAL CEILINGS & CLADDINGS

Jayminton Metal Ceiling & Cladding

Address: The entrance of Xiachen Village, Silian
Village Committee, Lubao Town, Sanshui
District, Foshan City

E-mail: Marketing@jayminton.com

Website: www.jayminton.com

杰明顿金属天花幕墙

工厂地址: 佛山市三水区芦苞镇四联村委下陈村口

邮箱: Marketing@jayminton.com

网址: www.jayminton.com

JMT-S1 CLIP-IN SYSTEM

卡扣式暗架天花系统

产品介绍 INTRODUCTION

JAYMINTON Clip-in system is a commonly used ceiling system features in hidden cables and metal plates. The closed ceiling system design shows the beauty of simplicity and consistency, moreover, the single ceiling tile can be disassembled at any time to facilitate future maintenance.

暗架方板天花，采用暗架夹入式悬挂系统，方便安装及拆卸改动室内间隔时倍感灵活。暗架式安装系统结构稳定隐蔽，面板表面平整、线条简洁美观，可为室内空间增添一份现代感。单块天花板可以随时拆卸，以方便日后的维护。

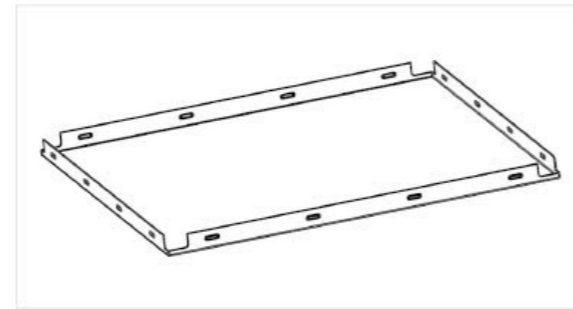
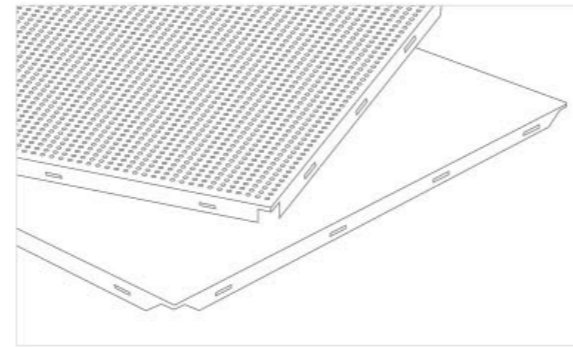
产品尺寸 DIMENSIONS

Panel size	面板尺寸
Length: ≤ 1200mm	长度: ≤ 1200mm
Width: ≤ 600mm	宽度: ≤ 600mm

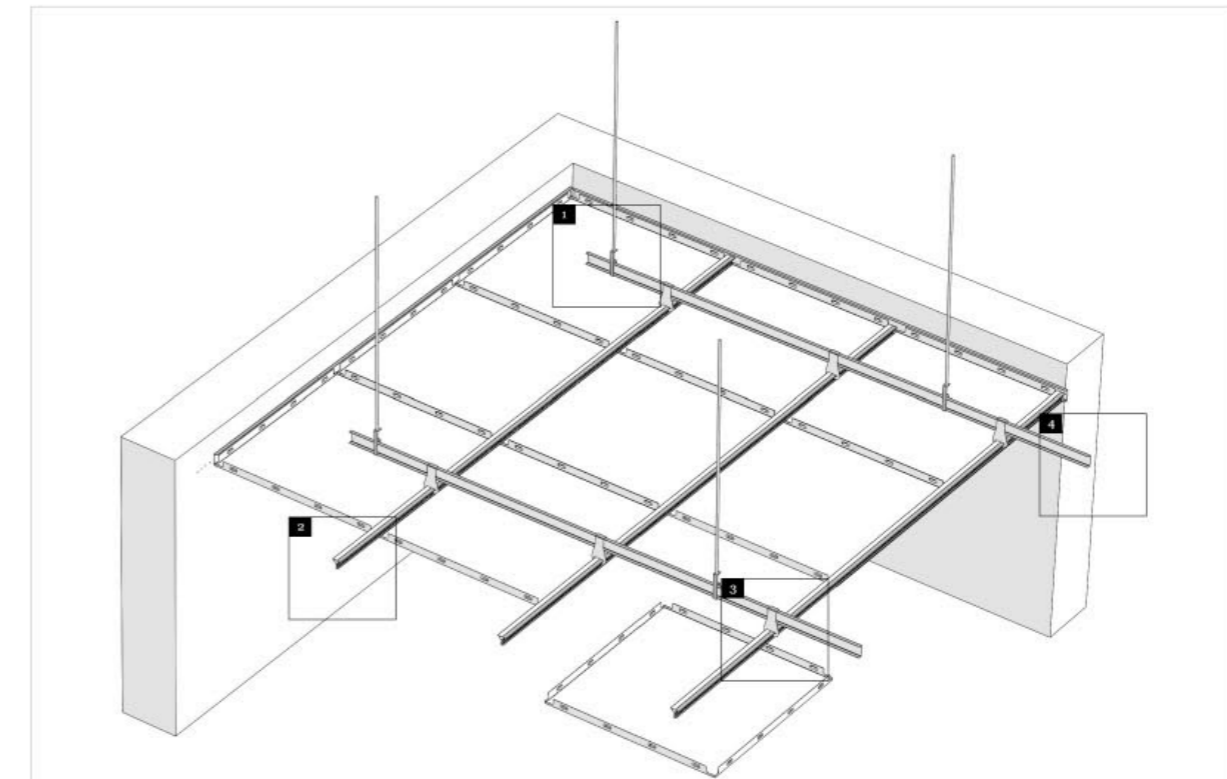
冲孔吸音 PERFORATION AND ACOUSTICS

To improve acoustic performance, sound-absorbing materials and mineral wool can be applied on the back of the perforated panels. Choose different perforation shapes and sizes according to customer needs, and also customize different sound-absorbing materials and their thicknesses.

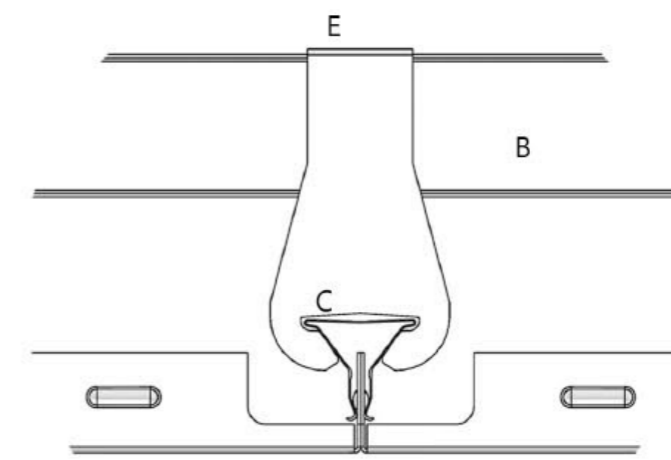
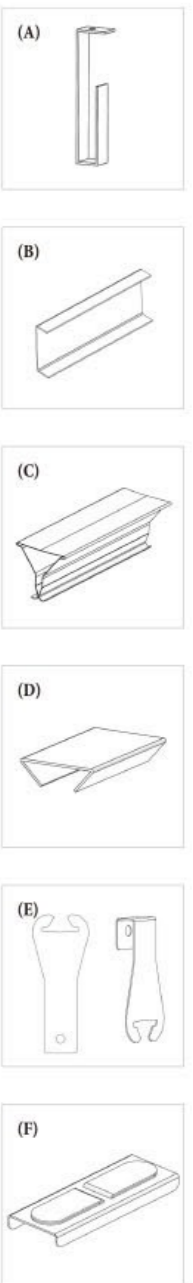
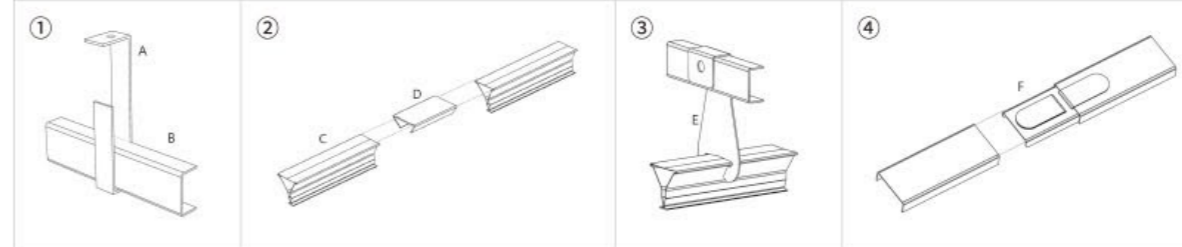
为了改善声学性能，吸音材料和矿棉可以被应用在穿孔板的背面。根据客户的需求选择不同穿孔形状和尺寸，也可以定制不同的吸音材料及其厚度。



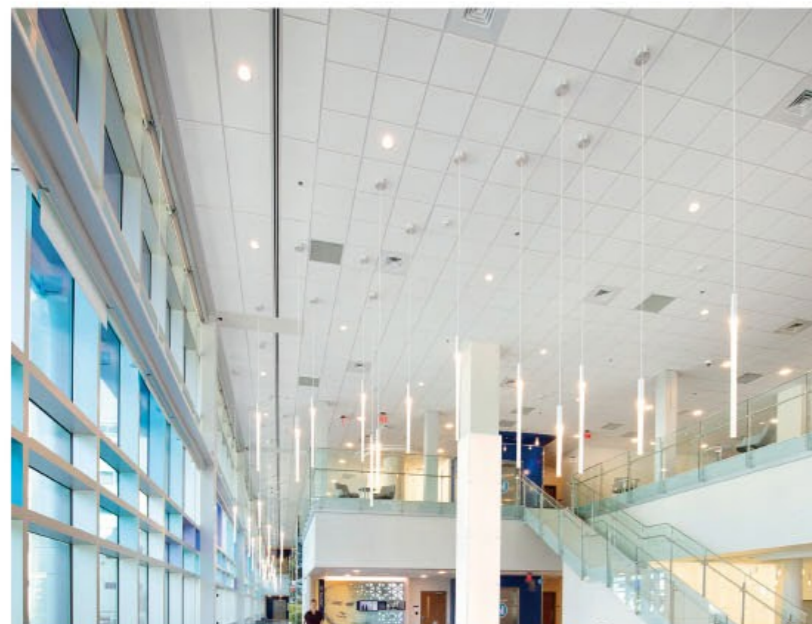
安装示意图 INSTALLATION DIAGRAM



- | | |
|-----------------------------------|------------|
| (A) Secondary Hanging Bracket | (A) 主龙骨吊件 |
| (B) Secondary Carrier | (B) 主龙骨 |
| (C) Spring Carrier | (C) 三角龙骨 |
| (D) Connection Bracket for MSC-01 | (D) 三角龙骨接件 |
| (E) Main Hanging Bracket | (E) 三角龙骨吊件 |
| (F) Connection Bracket for SSC-01 | (F) 主龙骨接件 |



Section Drawing / 正面节点图

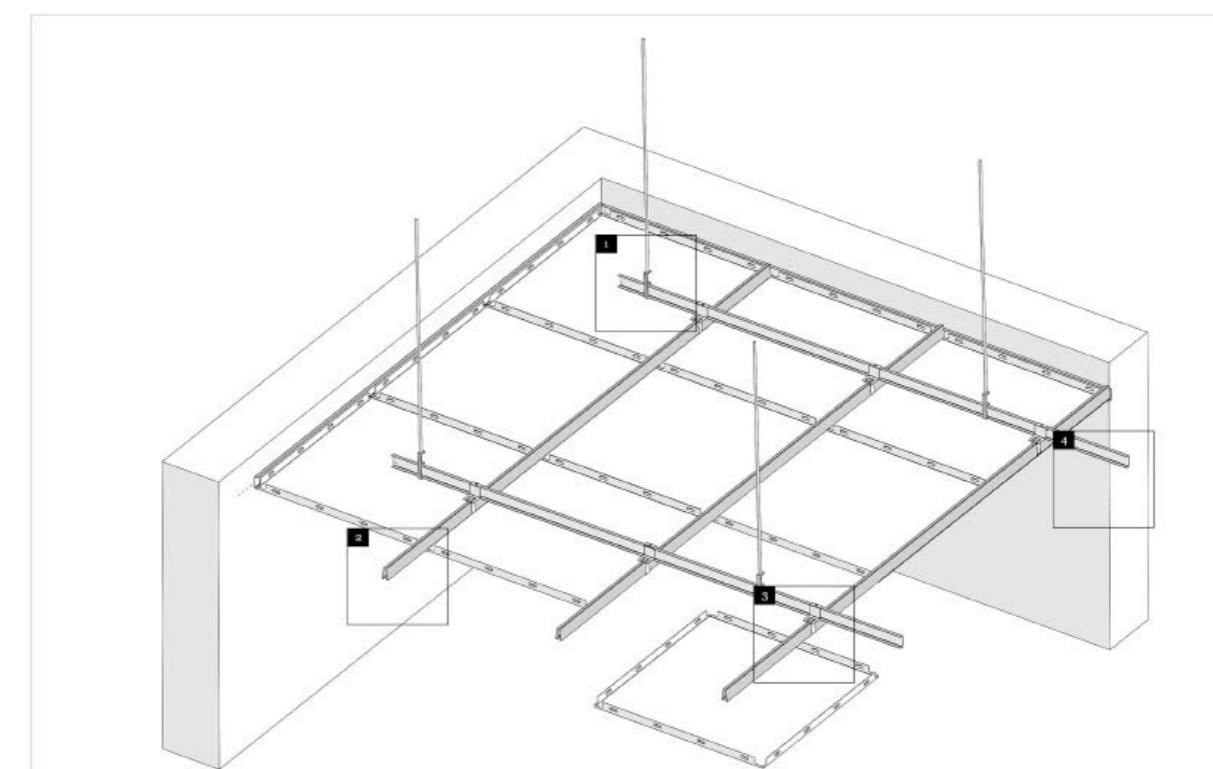


■ Singapore Office Building / 新加坡办公大楼

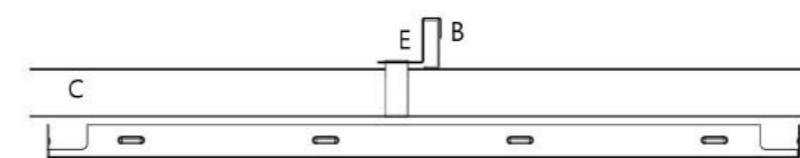
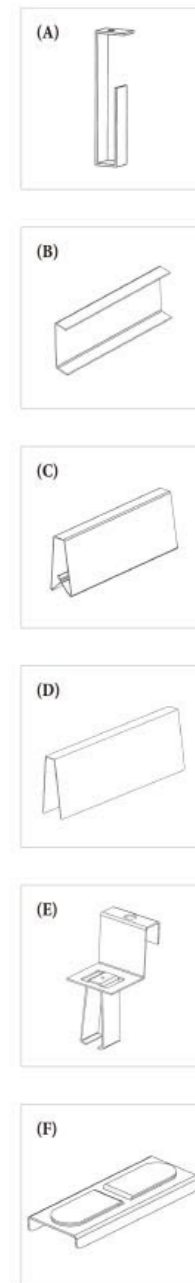
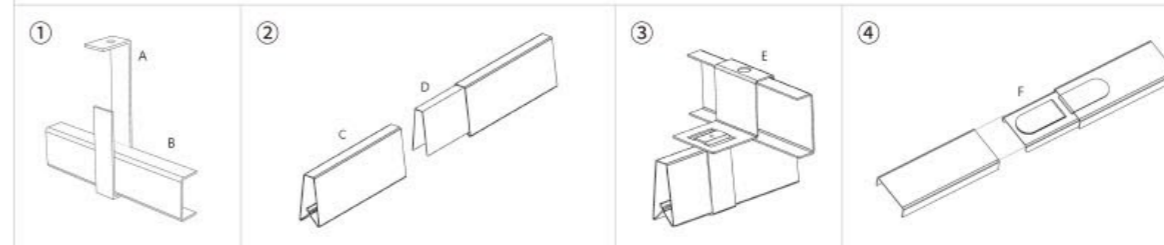


■ Guangzhou Commercial Street / 广州商业街

安装示意图 INSTALLATION DIAGRAM



- | | |
|-----------------------------------|------------|
| (A) Secondary Hanging Bracket | (A) 主龙骨吊件 |
| (B) Secondary Carrier | (B) 主龙骨 |
| (C) Spring Carrier | (C) A字龙骨 |
| (D) Connection Bracket for MSC-02 | (D) A字龙骨接件 |
| (E) Main Hanging Bracket | (E) A字龙骨吊件 |
| (F) Connection Bracket for SSC-01 | (F) 主龙骨接件 |



Section Drawing / 正面节点图

JMT-S1
CLIP-IN SYSTEM
卡扣式暗架天花系统