

JAYMINTON METAL CEILINGS & CLADDINGS

Jayminton Metal Ceiling & Cladding

Address: The entrance of Xiachen Village, Silian
Village Committee, Lubao Town, Sanshui
District, Foshan City

E-mail: Marketing@jayminton.com

Website: www.jayminton.com

杰明顿金属天花幕墙

工厂地址: 佛山市三水区芦苞镇四联村委下陈村口

邮箱: Marketing@jayminton.com

网址: www.jayminton.com



05

EXPANDED MESH CEILING SERIES

网板天花系列 > > > > > > >

The metal mesh ceiling has the characteristics of a comprehensive and transparent vision. Moreover, it is a ceiling system that can be used in various architectural designs and has unique visual effects. A wide selection of styles, materials, and colors ensures every project has a unique look.

金属网格天花具有开放、透明的视野；是一种可用于多种建筑设计，视觉效果独特的吊顶系统。在样式、材质和颜色方面有广泛的选择，可以确保每个项目拥有独特的外观。

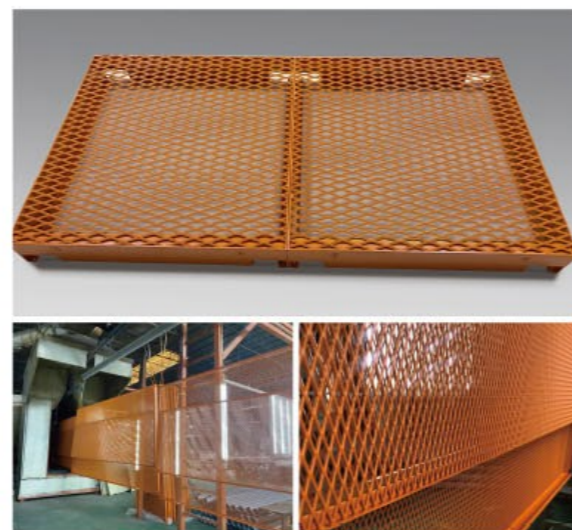
EXPANDED MESH CEILING

网板天花

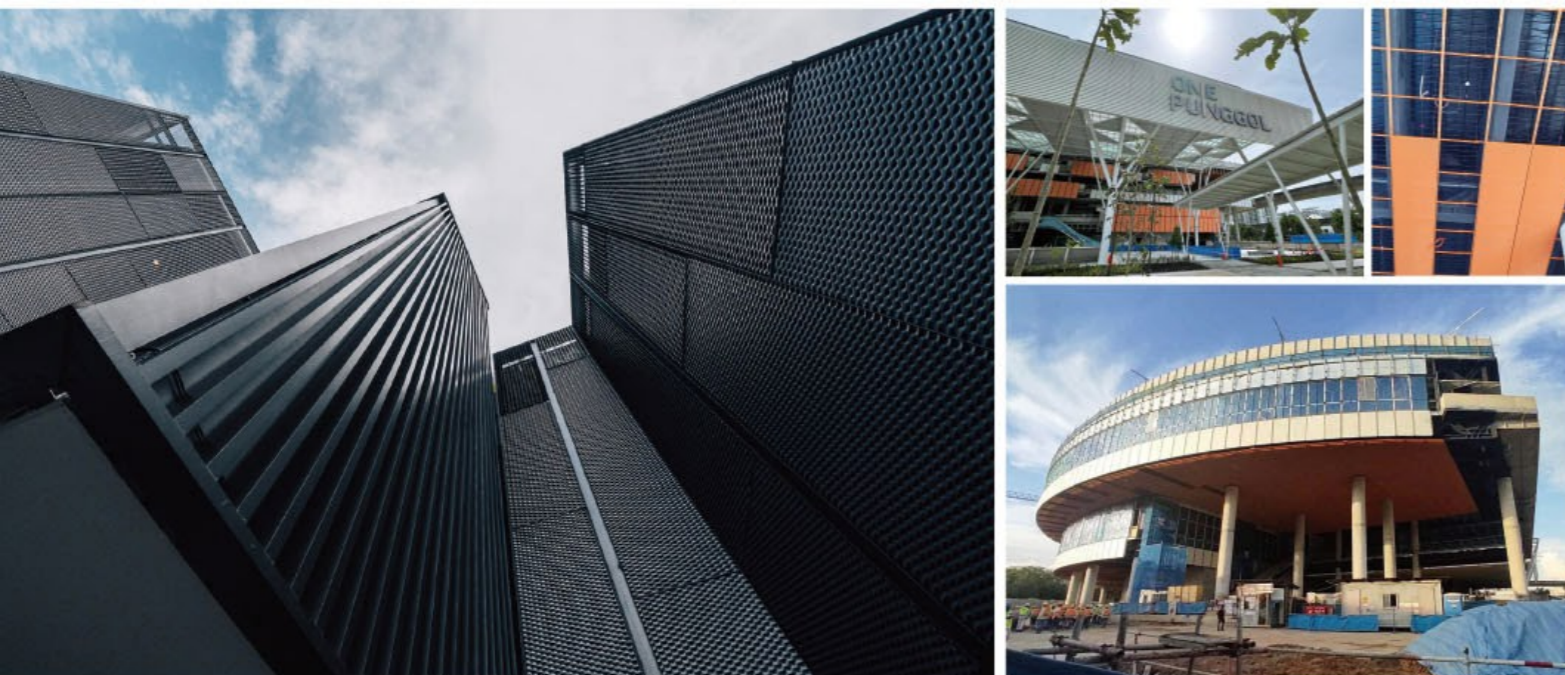
产品介绍 INTRODUCTION

The metal grid cut and stretched on the surface of metal sheet through a special manufacturing process to produce a diamond-shaped mesh. Through changes in a mesh shape, mesh direction, lighting, and color, the suspended ceiling can be more transparent and dynamic. Different mesh types and materials make the ceiling design more individual and fashionable.

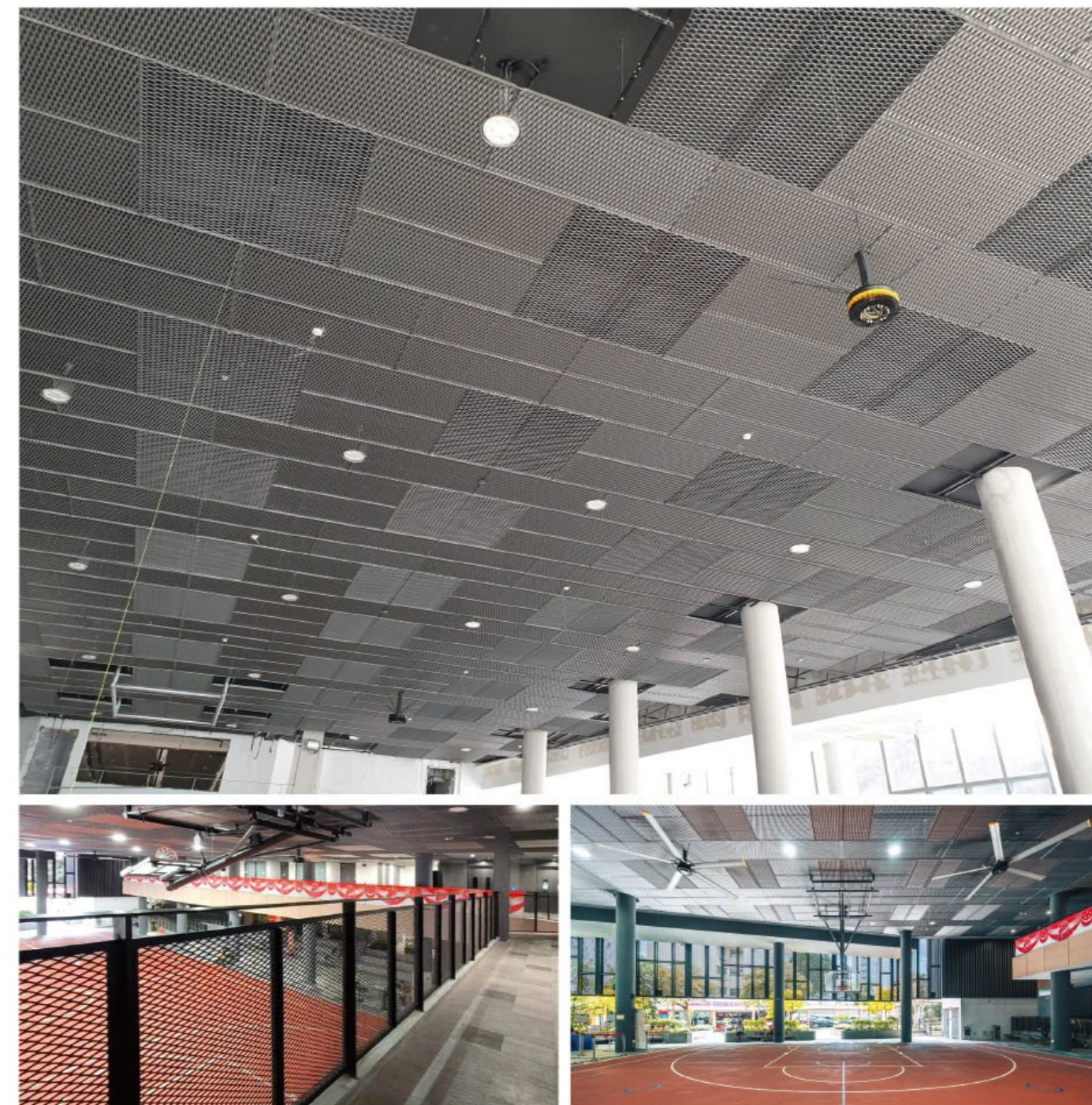
金属网格是通过特殊的制造工艺在金属薄片表面同时进行切割和拉伸，制作出菱形网孔。通过网孔形状、网孔方向以及照明和颜色的变化，可以将吊顶表现得更加通透和富有动感。不同的网孔类型和材质，使吊顶设计更加富有个性、更具有时尚气息。



■ Singapore Town Hub / 新加坡镇中心



■ Singapore Community Club / 新加坡民众俱乐部



EXPANDED MESH CEILING

网板天花

产品样式 PLATTEN TYPE

隐形框 Version 1 : Welded-on Frame



隐形框 Version 2 : Bend with inside welded frame



明框 Version 3 : Welded-on Frame



产品样式 PLATTEN TYPE

浮框 Version 4 : End-welded tp expanded metal



Version 5 : Bent edges without frame



Depands on system

Version 6 : Visible frame



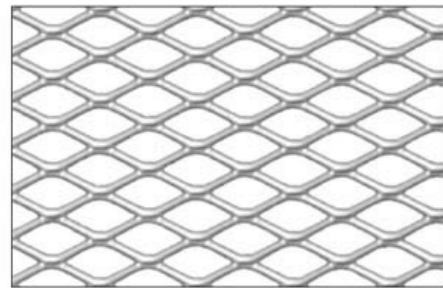
Version 7 : Circumferential frame on rear side



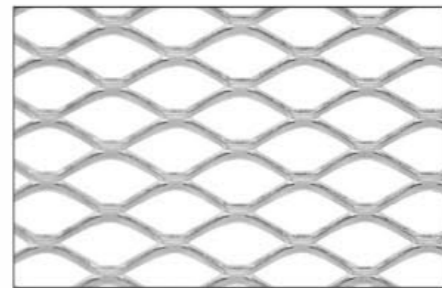
EXPANDED MESH CEILING

网板天花

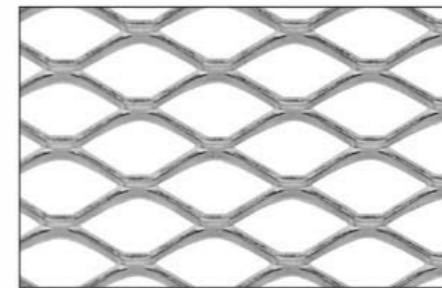
网格型号 MESH MODEL



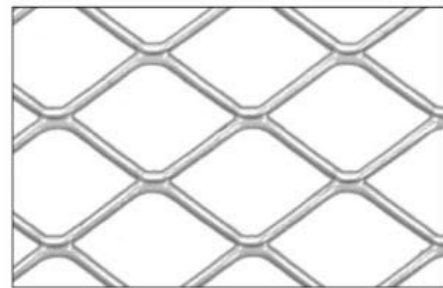
M100
M100_1.5



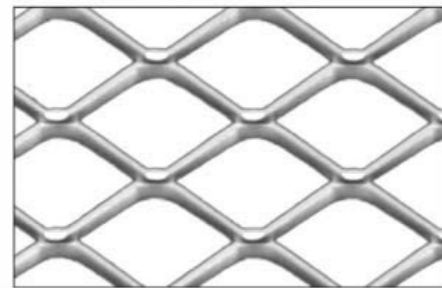
M110 [standard]



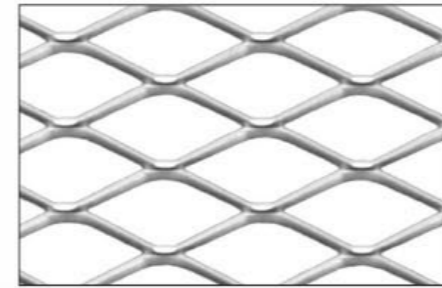
M200
M200_1.5



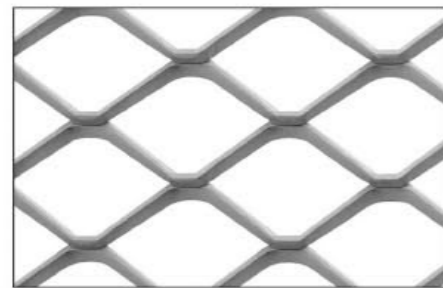
M210



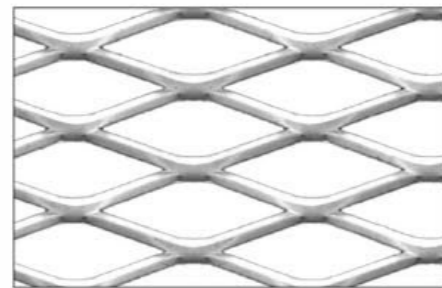
M220



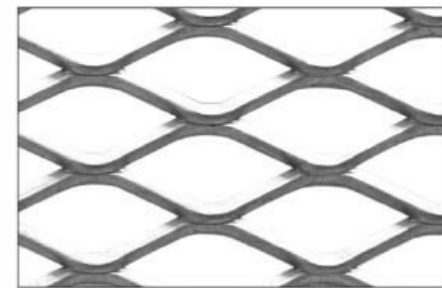
M230
M230_1.5



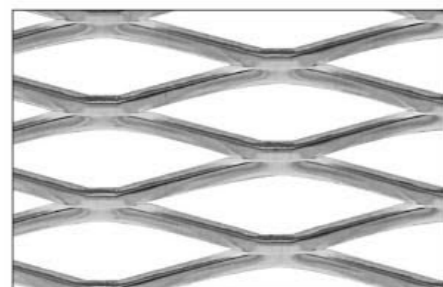
M240
M240_1.5



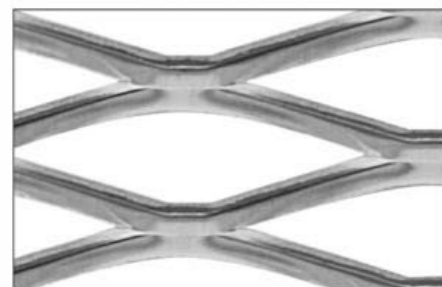
M250
M250_1.5



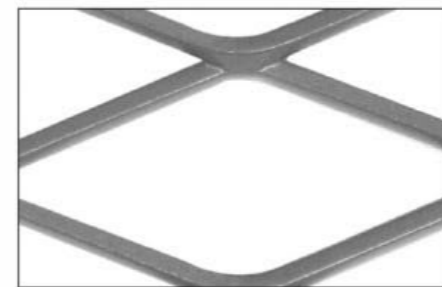
M260
M260_1.5 [standard]



M400 [standard]



M600



M610

网格参数 MESH PARAMETER

	Style 规格	Mesh Length 网格长度	Mesh Width 网格宽度	Web Width 网的宽度	Web Thickness 网的厚度	Open Area 开放区域
	M100	12.5mm	6mm	1mm	1mm	66.6%
	M100_1.5	12.5mm	6mm	1.5mm	1.5mm	50%
标准的 STANDARD	M110*	16mm	8mm	1.5mm	1.5mm	62.5%
	M200	20mm	10mm	2mm	1mm	60%
	M200_1.5	20mm	10mm	2mm	1.5mm	60%
	M210	25mm	16mm	1.5mm	1.5mm	81.2%
	M220	25mm	15mm	2.5mm	1.5mm	66.6%
	M230	25mm	10mm	2mm	1mm	60%
	M230_1.5	25mm	10mm	2mm	1.5mm	60%
	M240	25mm	16mm	2mm	1mm	75%
	M240_1.5	25mm	16mm	2mm	1.5mm	75%
	M250	28mm	10mm	2mm	1mm	60%
	M250_1.5	28mm	10mm	2mm	1.5mm	60%
标准的 STANDARD	M260	28mm	12mm	2mm	1mm	66.6%
	M260_1.5*	28mm	12mm	2mm	1.5mm	66.6%
标准的 STANDARD	M400*	44mm	12mm	3mm	1.5mm	50%
	M600*	62mm	20mm	2.5mm	1.5mm	75%
	M610*	62mm	25mm	3mm	2mm	76%